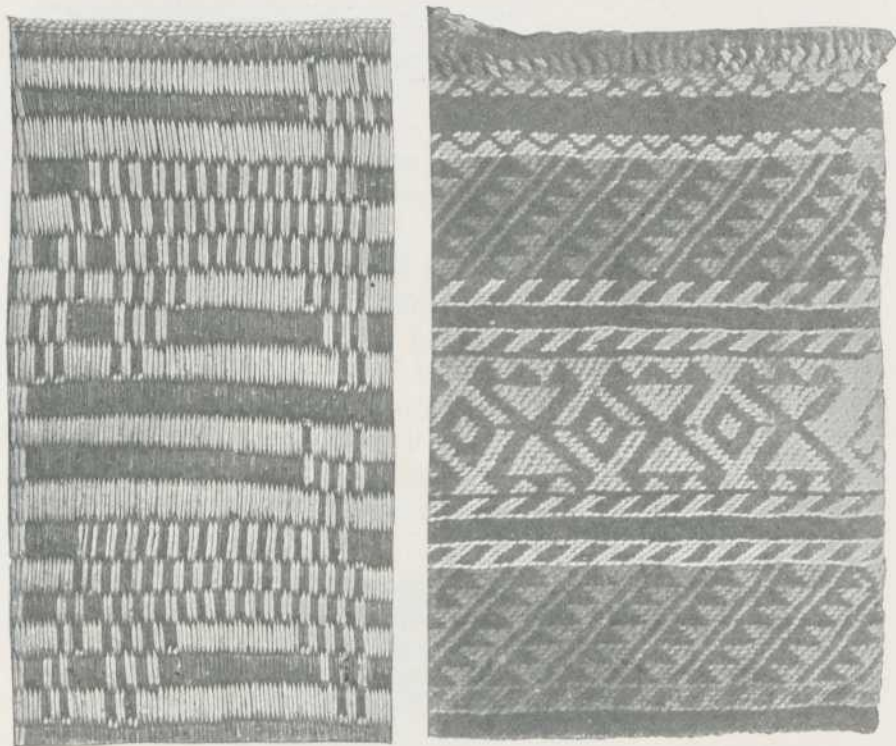


the shape of which has also influenced the manner of representing the human form (Case 28 *e*). The geometric designs (Cases 28 *e*, 31) are mostly arranged in bands, and consist of triangles, zigzags and diamonds, which show only slight relation to those of the Indians of the Plains, while they remind us somewhat of the designs of the Indians of the State of Washington. We may perhaps recognize in some of the triangles with points under their bases the tent design so common



among the Plains Indians. The whole make-up, however, of the geometric forms is quite distinctive. If there ever has been any interpretation of these geometric designs, it seems to have been forgotten, and the designs are considered purely as ornamental, not as symbolic. The only striking exception is the same spider-web design that we find among the Sioux Indians, and which occurs here practically in the same form. (Case 28 *h*.)